

THE HAZEL

4 Bedroom Home



Artist's Impression

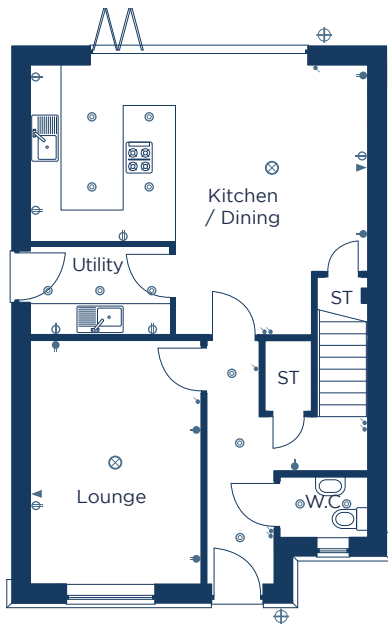
A contemporary four bedroom detached home.

Plots: 4

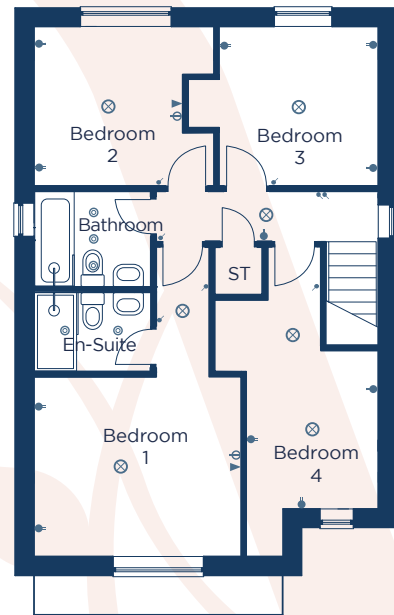
THE HAZEL

4 Bedroom Home

Ground Floor



First Floor



Kitchen / Dining
6500 x 5200 21'4" x 17'1"

Lounge
3250 x 4700 10'8" x 15'5"

W.C.
1700 x 1170 5'7" x 3'10"

Utility
2700 x 1700 8'10" x 5'7"

Bedroom 1
3900 x 3400 12'10" x 11'2"

En-Suite
2200 x 1500 7'3" x 4'11"

Bedroom 2
3400 x 3000 11'2" x 9'10"

Bedroom 3
3000 x 3000 9'10" x 9'10"

Bedroom 4
2500 x 2400 8'2" x 7'11"

Bathroom
2200 x 1800 7'3" x 5'11"

● Low level socket

⊖ High level socket

⊗ Pendant light

⊕ External light

— Fluorescent light

⊙ Spotlight

⦿ Light switch

▶ TV point

▷ BT point

CONSUMER CODE FOR HOME BUILDERS

www.consumercode.co.uk

danumhomes.co.uk

All information contained in this leaflet is taken from design intent material and may be subject to further design development. Images are for illustration only and do not form part of any contract of sale. The dimensions and layouts given are estimated and for guidance only and are subject to chosen plot. T2 6662 Revision Date: 09.06.26 Revision: 02

The Vines