

THE BIRCH

4 Bedroom Home



Artist's Impression

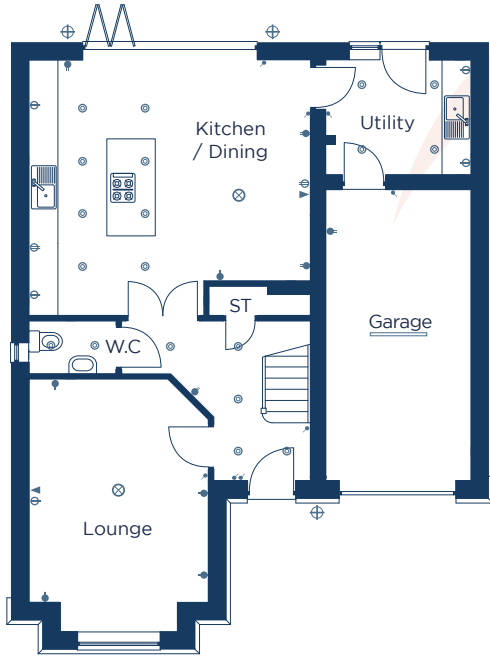
A beautiful four bedroom detached home with garage.

Plots: 3, 7, 8

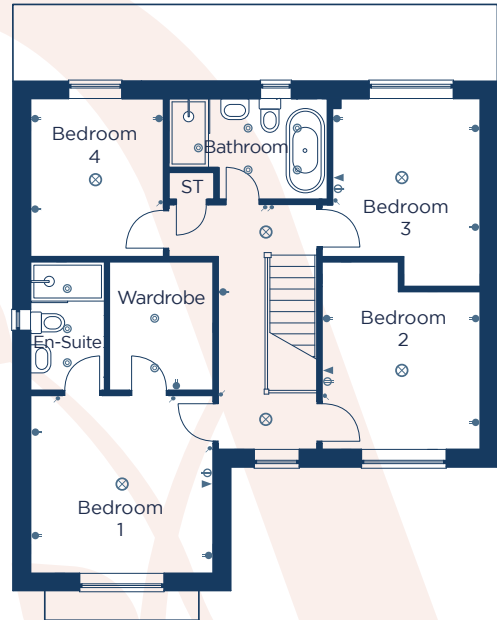
THE BIRCH

4 Bedroom Home

Ground Floor



First Floor



Kitchen / Dining

5800 x 5250 19'0" x 17'3"

Lounge

3700 x 5200 12'2" x 17'0"

W.C

1800 x 1100 5'11" x 3'7"

Utility

3000 x 2350 9'10" x 7'9"

Garage

3000 x 6000 9'10" x 19'8"

Bedroom 1

3700 x 3600 12'2" x 11'10"

Wardrobe

2100 x 2600 6'11" x 8'6"

En-Suite

1500 x 2600 4'11" x 8'6"

Bedroom 2

3200 x 3800 10'6" x 12'6"

Bedroom 3

3200 x 3800 10'6" x 12'6"

Bedroom 4

2700 x 3200 8'10" x 10'6"

Bathroom

3200 x 2050 10'6" x 6'9"

● Low level socket

⊖ High level socket

⊗ Pendant light

⊕ External light

— Fluorescent light

⊙ Spotlight

⦿ Light switch

▶ TV point

▷ BT point

CONSUMER CODE FOR HOME BUILDERS

www.consumercode.co.uk

danumhomes.co.uk

All information contained in this leaflet is taken from design intent material and may be subject to further design development. Images are for illustration only and do not form part of any contract of sale. The dimensions and layouts given are estimated and for guidance only and are subject to chosen plot. T2 6662 Revision Date: 09.06.26 Revision: 02

The Vines