

THE ACACIA

4 Bedroom Home



Artist's Impression

A beautiful four bedroom detached home with garage.

Plots: 5, 6

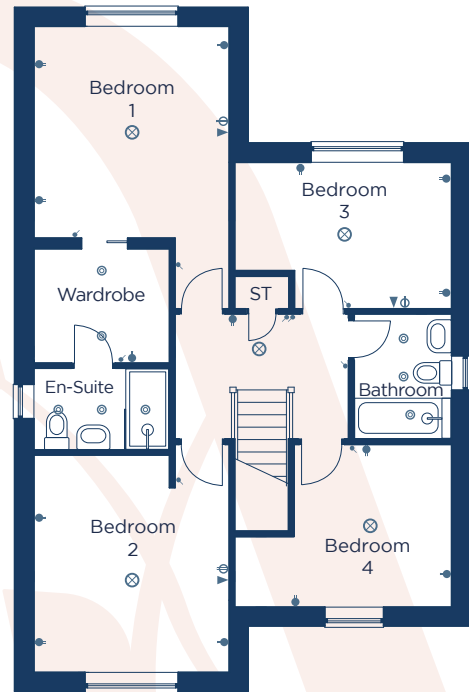
THE ACACIA

4 Bedroom Home

Ground Floor



First Floor



Kitchen / Dining
7700 x 6400 25'3" x 21'0"

Lounge
3600 x 5400 11'10" x 17'9"

W.C.
1200 x 1800 3'11" x 5'11"

Utility
1900 x 2300 6'3" x 7'7"

Bedroom 1
3600 x 3900 11'10" x 12'10"

Wardrobe
2500 x 2100 8'2" x 6'11"

En-Suite
2500 x 1500 8'2" x 4'11"

Bedroom 2
3600 x 4000 11'10" x 13'2"

Bedroom 3
4000 x 2700 13'2" x 8'10"

Bedroom 4
4000 x 3000 13'2" x 9'10"

Bathroom
1800 x 2300 5'11" x 7'7"

● Low level socket

⊖ High level socket

⊗ Pendant light

⊕ External light

— Fluorescent light

⊙ Spotlight

⦿ Light switch

▶ TV point

▷ BT point

CONSUMER CODE FOR HOME BUILDERS

www.consumercode.co.uk

danumhomes.co.uk

All information contained in this leaflet is taken from design intent material and may be subject to further design development. Images are for illustration only and do not form part of any contract of sale. The dimensions and layouts given are estimated and for guidance only and are subject to chosen plot. T2 6662 Revision Date: 09.06.26 Revision: 02

The Vines