



DANUM  
—HOMES—  
Excellence in Build

The  
hedgegrow  
at Warren Wood

[www.danumhomes.co.uk](http://www.danumhomes.co.uk)

# Site Plan



Phase 3

Phase 2

Phase 1b

Phase 1a



-  The Laurel
-  The Maple
-  The Hawthorne
-  The Oak
-  The Birchwood
-  The Wisteria
-  The Elm

The  
**hedgegrow**  
at Warren Wood



[danumhomes.co.uk](https://danumhomes.co.uk)



# The Laurel

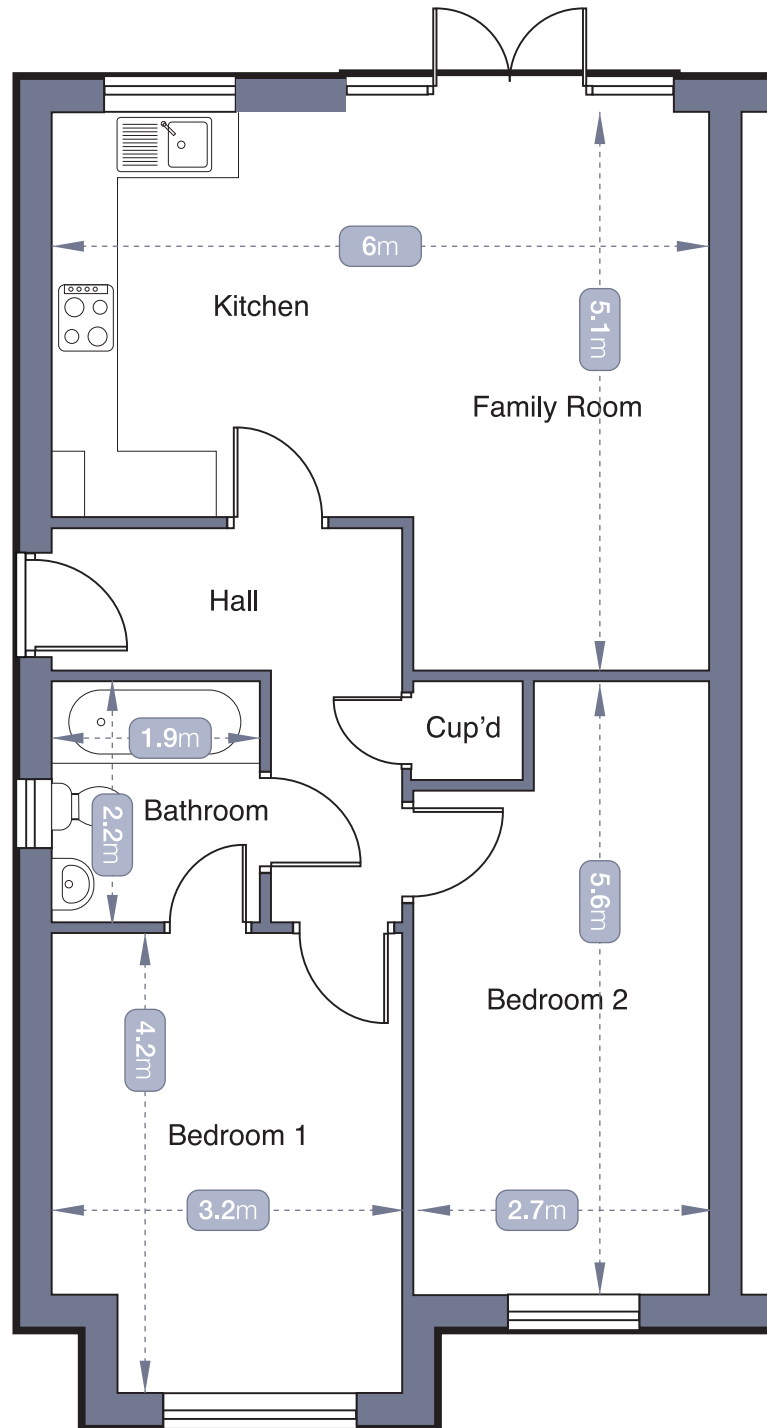
2 bedroom semi-detached bungalow

The Hedgerow at Warren Wood, Gainsborough

The  
hedgerow  
at Warren Wood



[danumhomes.co.uk](http://danumhomes.co.uk)



## The Laurel Dimensions

**DISCLAIMER:**  
Note all measurements and sizes are approximate. In no way can we be held accountable for any inaccuracies.



# Specification

## The Laurel

2 bedroom semi-detached bungalow

### Bathroom

*Contemporary bathroom to include:*

Bath with full tiling behind the bath area, drench bar shower with glass shower screen

Or:

Walk in shower cubicle with drench bar shower, full tiling behind the shower and screen.

Pedestal Sink with splash back tiling

Toilet

Chrome heated towel rail

Spotlights

Vinyl cushion flooring

### Electrical

*Please see the attached electrical layout sheet for what is included in the electrical specification*

### Entrance hall

Vinyl cushion flooring

Pendant light

### External

3m x 1.8 patio area

Paths to perimeter

External light to the rear and side door

Turf to the front and rear garden

6ft fencing to the perimeter and between plots

### Kitchen

As per design choice of 2 different door finishes and various colour choices

Choice of worktops and upstands

Spotlights to the kitchen area

Vinyl cushion flooring to the kitchen area

### Kitchen Appliances

4 zone ceramic hob with contemporary glass splash back

Chimney extractor fan

Single fan assisted built under oven

Integrated 70/30 fridge freezer

Stainless steel 1.5 bowl sink and waste

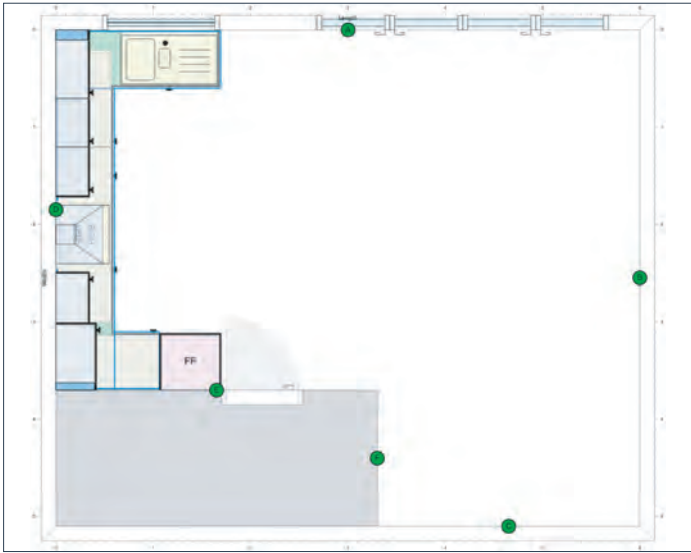
Chrome monoblock taps



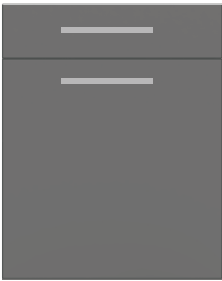
[danumhomes.co.uk](http://danumhomes.co.uk)



The Laurel  
*Kitchen Specification*



BAND 1 SPECIFICATION



Autograph Gloss  
or Slab Matt



Emily Handle  
Nickle



Phoenix Tap  
Chrome



Stainless Steel  
1.5 Bowl Sink



Matrix Extractor



Washed Concrete Matt



Matrix Single  
Oven



Matrix Ceramic  
Hob



Zanussi 70/30  
Fridge Freezer





# The Maple

3 bedroom semi-detached house

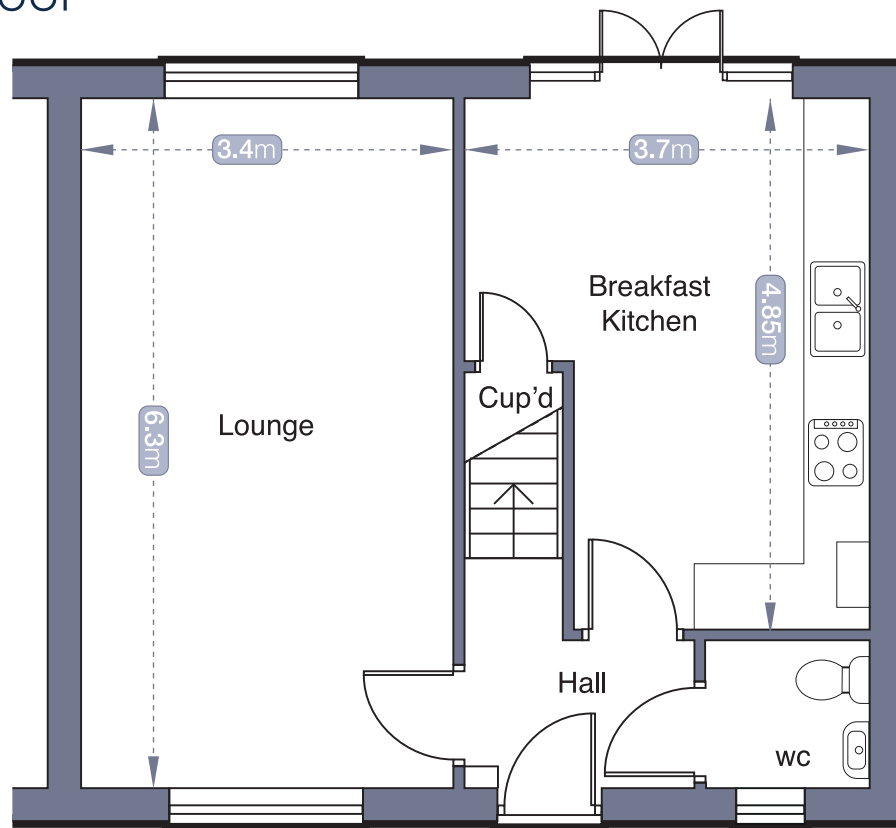
The Hedgerow at Warren Wood, Gainsborough

The  
**hedgerow**  
at Warren Wood



[danumhomes.co.uk](http://danumhomes.co.uk)

## Ground Floor



## First Floor





# Specification

## The Maple

3 bedroom semi-detached house

### Bathroom

*Contemporary bathroom to include:*

Bath with splash back tiling  
Pedestal Sink with splash back tiling  
Toilet  
Chrome heated towel rail  
Spotlights  
Vinyl cushion flooring

### En-suite

Shower enclosure with full tiling to the walls  
behind the enclosure  
Toilet  
Pedestal Sink with splash back tiling  
Chrome heated towel rail  
Spotlights  
Vinyl cushion flooring

### Downstairs WC

Toilet  
Pedestal Sink  
Chrome heated towel rail  
Domelight  
Vinyl cushion flooring

### Hall

Spotlight  
Vinyl cushion flooring

### Kitchen

As per design choice of 2 different door finishes  
and various colour choices  
Choice of worktops and upstands  
Spotlights to the kitchen area  
Vinyl cushion flooring

### Kitchen Appliances

4 zone ceramic hob with contemporary glass  
splash back  
Chimney extractor fan  
Single fan assisted built under oven  
Integrated 70/30 fridge freezer  
Dishwasher  
Stainless steel 1.5 sink and waste  
Chrome monoblock taps

### Electrical

*Please see the attached for what is included  
in the electrical specification*

### External

2.4m x 1.8 patio area  
Paths to perimeter  
External lighting adjacent to the front and French  
doors  
Turf to the front and rear garden  
6ft fencing to the perimeter and between plots

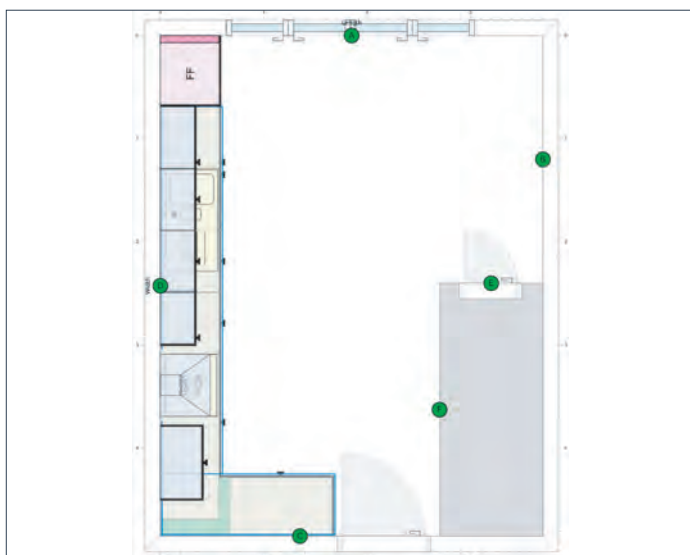


[danumhomes.co.uk](http://danumhomes.co.uk)

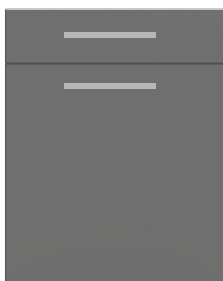


# The Mapel

*Kitchen Specification*



## BAND 1 SPECIFICATION



Autograph Gloss  
or Slab Matt



Emily Handle  
Nickel



Washed Concrete Matt



Phoenix Tap  
Chrome



Stainless Steel  
1.5 Bowl Sink



Matrix Single  
Oven



Matrix Ceramic  
Hob



Matrix Extractor



Zanussi  
Dishwasher



Zanussi 70/30  
Fridge Freezer





# The Hawthorne

3 bedroom semi-detached house

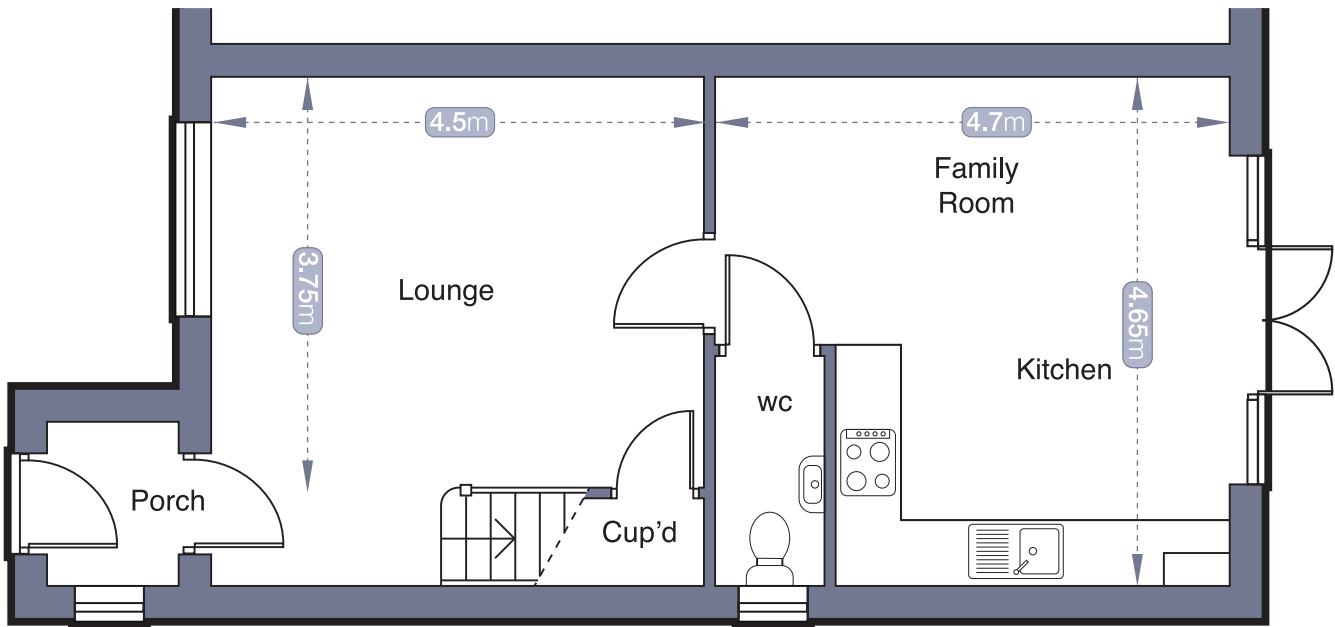
The Hedgerow at Warren Wood, Gainsborough

The  
hedgerow  
at Warren Wood

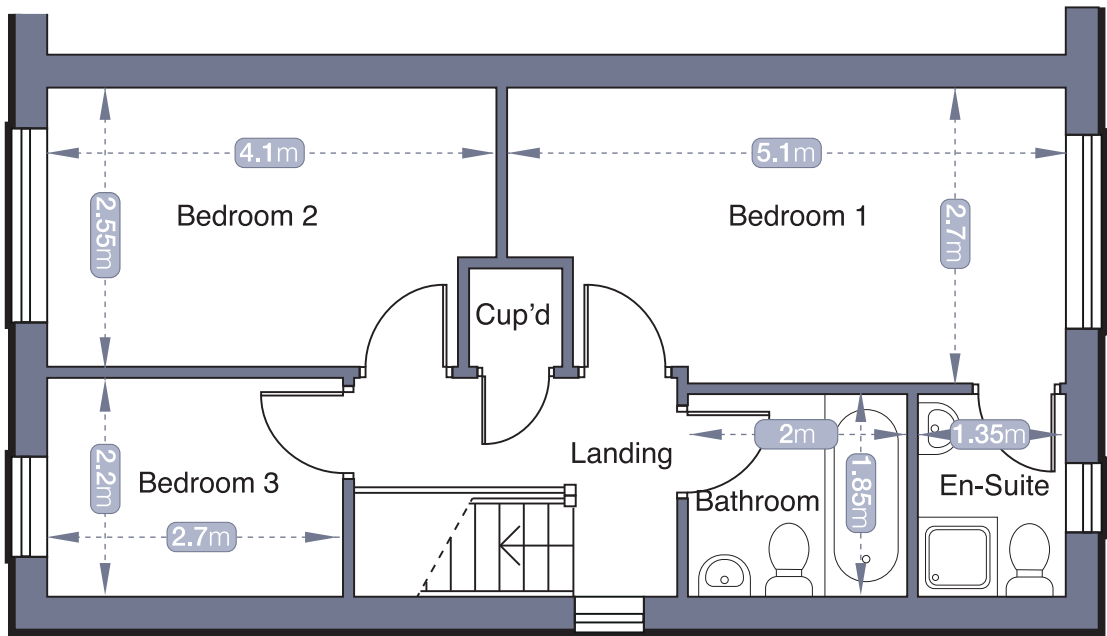


[danumhomes.co.uk](https://danumhomes.co.uk)

# Ground Floor



# First Floor





# Specification

## The Hawthorne

3 bedroom semi-detached house

### Bathroom

*Contemporary bathroom to include:*

Bath with splash back tiling  
Pedestal Sink with splash back tiling  
Toilet  
Chrome heated towel rail  
Spotlights  
Vinyl cushion flooring

### En-suite

Shower enclosure with full tiling to the walls  
behind the enclosure  
Toilet  
Pedestal Sink with splash back tiling  
Chrome heated towel rail  
Spotlights  
Vinyl cushion flooring

### Downstairs WC

Toilet  
Pedestal sink  
Chrome heated towel rail  
Domelight  
Vinyl cushion flooring

### Entrance Porch

Vinyl cushion flooring  
Spotlight

### Kitchen

As per design choice of 2 different door finishes and  
various colour choices  
Choice of worktops and upstands  
Spotlights to the kitchen area  
Vinyl cushion flooring

### Kitchen Appliances

4 zone ceramic hob with contemporary glass  
splash back  
Chimney extractor fan  
Single fan assisted built under oven  
Integrated 70/30 fridge freezer  
Dishwasher  
Stainless steel 1.5 sink and waste  
Chrome monoblock taps

### Electrical

*Please see the attached for what is included  
in the electrical specification*

### External

3m x 1.8 patio area  
Paths to perimeter  
External lighting adjacent to the front and French  
doors  
Turf to the front and rear garden  
6ft fencing to the perimeter and between plots

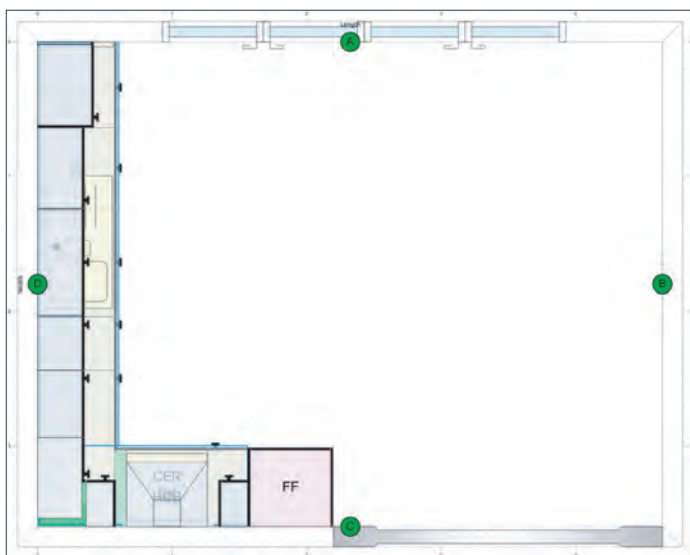


[danumhomes.co.uk](http://danumhomes.co.uk)

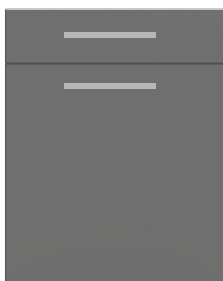


# The Hawthorne

## Kitchen Specification



### BAND 1 SPECIFICATION



Autograph Gloss  
or Slab Matt



Emily Handle  
Nickle



Washed Concrete Matt



Phoenix Tap  
Chrome



Stainless Steel  
1.5 Bowl Sink



Matrix Single  
Oven



Matrix Ceramic  
Hob



Matrix Extractor



Zanussi  
Dishwasher



Zanussi 70/30  
Fridge Freezer





# The Oak

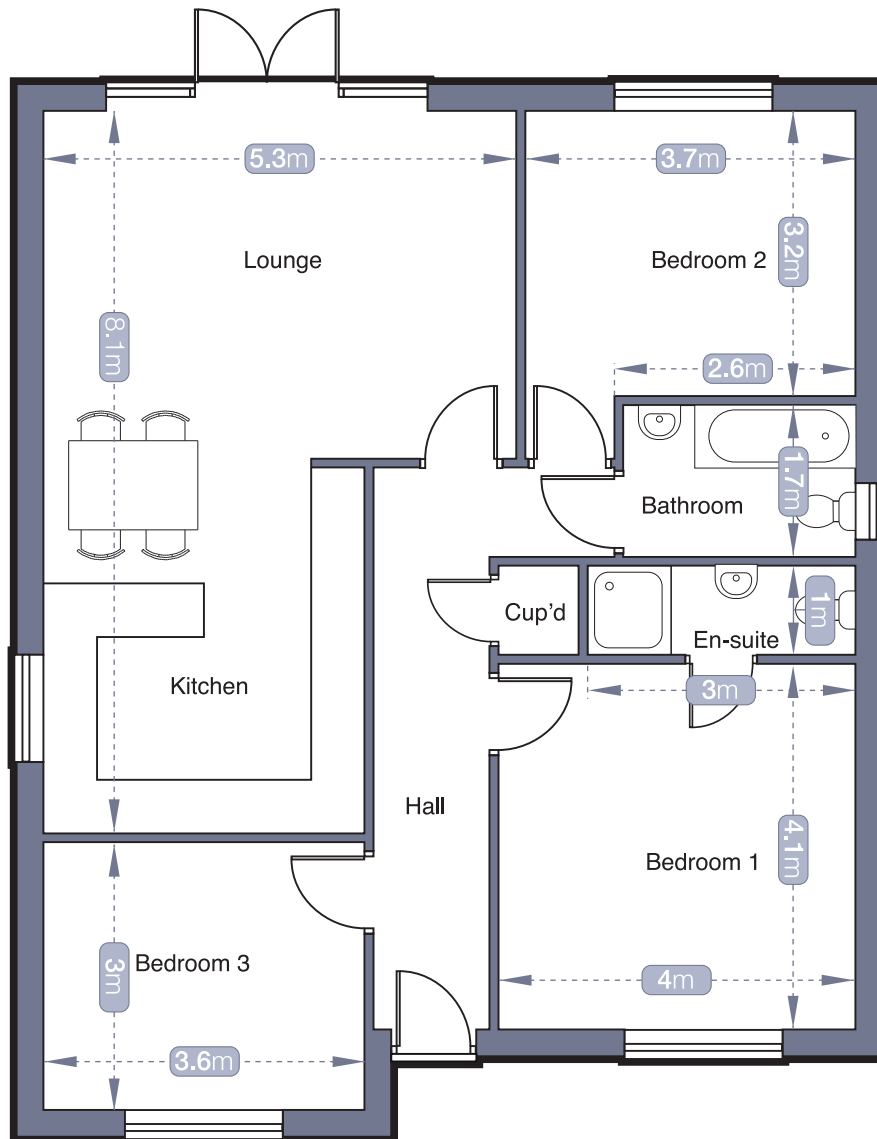
3 bedroom detached bungalow

The Hedgerow at Warren Wood, Gainsborough

The  
hedgerow  
at Warren Wood



[danumhomes.co.uk](https://danumhomes.co.uk)



## The Oak Dimensions

**DISCLAIMER:**  
Note all measurements and sizes are approximate. In no way can we be held accountable for any inaccuracies.



# Specification

## The Oak

3 bedroom detached bungalow

### Bathroom

*Contemporary bathroom to include:*

Bath with splash back tiling

Sink with splash back tiling

Toilet

Chrome heated towel rail

Spotlights

Vinyl cushion flooring

### En-suite

Shower enclosure with full tiling to the walls  
behind the enclosure

Toilet

Sink with splash back tiling

Chrome heated towel rail

Spotlights

Vinyl cushion flooring

### EntranceHall

Vinyl cushion flooring

Pendant light

### Kitchen

As per design choice of 2 different door finishes  
and various choice colours

Spotlights to the kitchen area

Vinyl cushion flooring

### Kitchen Appliances

4 zone ceramic hob with contemporary glass  
splash back

Chimney extractor fan

Single fan assisted built under oven

Integrated 70/30 fridge freezer

Dishwasher

Stainless steel 1.5 sink and waste

Chrome monoblock taps

### Electrical

*Please see the attached for what is included  
in the electrical specification*

### External

3m x 1.8 patio area

Paths to perimeter

External lighting adjacent to the front and French  
doors

Turf to the front and rear garden

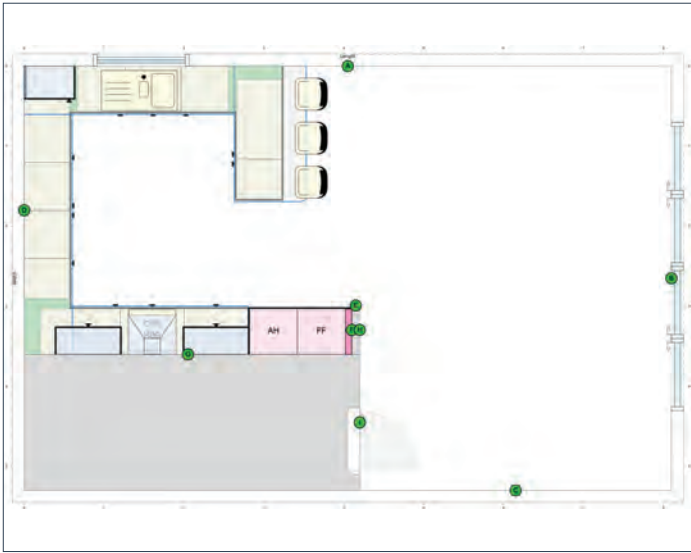
6ft fencing to the perimeter and between plots



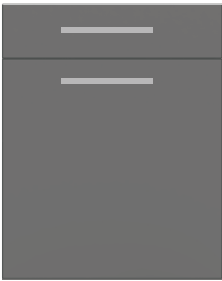
[danumhomes.co.uk](http://danumhomes.co.uk)



The Oak  
*Kitchen Specification*



BAND 1 SPECIFICATION



Autograph Gloss  
or Slab Matt



Emily Handle  
Nickle



Washed Concrete Matt



Phoenix Tap  
Chrome



Stainless Steel  
1.5 Bowl Sink



Matrix Single  
Oven



Matrix Ceramic  
Hob



Matrix Extractor



Zanussi  
Dishwasher



Zanussi 70/30  
Fridge Freezer





# The Birchwood

3 bedroom detached house

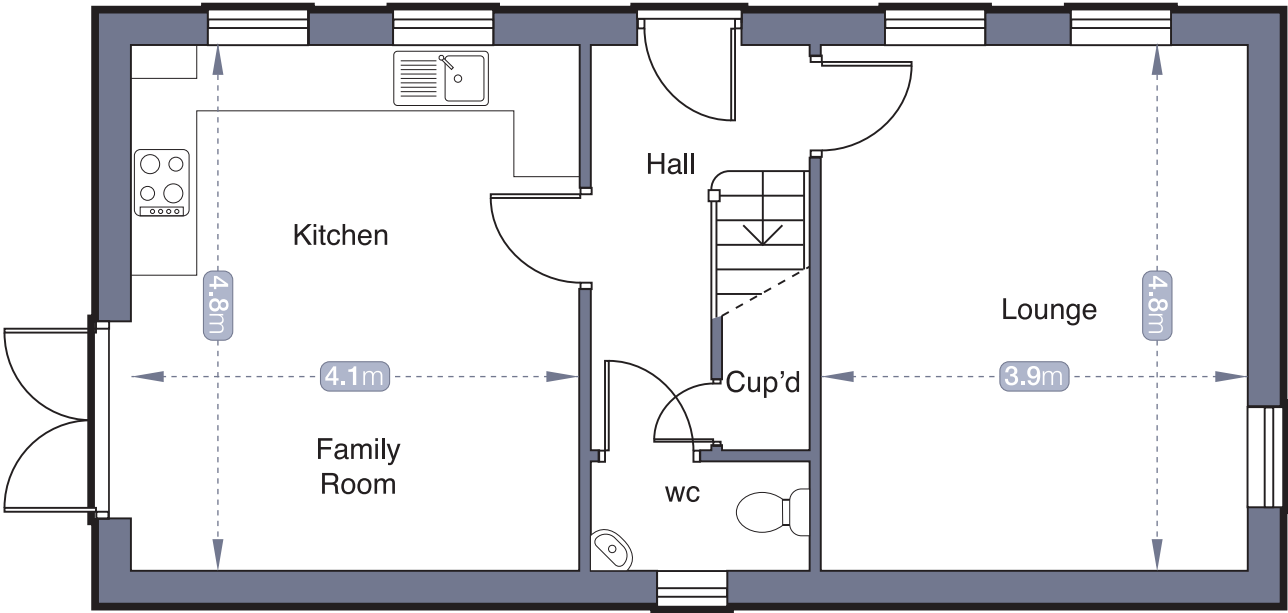
The Hedgerow at Warren Wood, Gainsborough

The  
**hedgerow**  
at Warren Wood

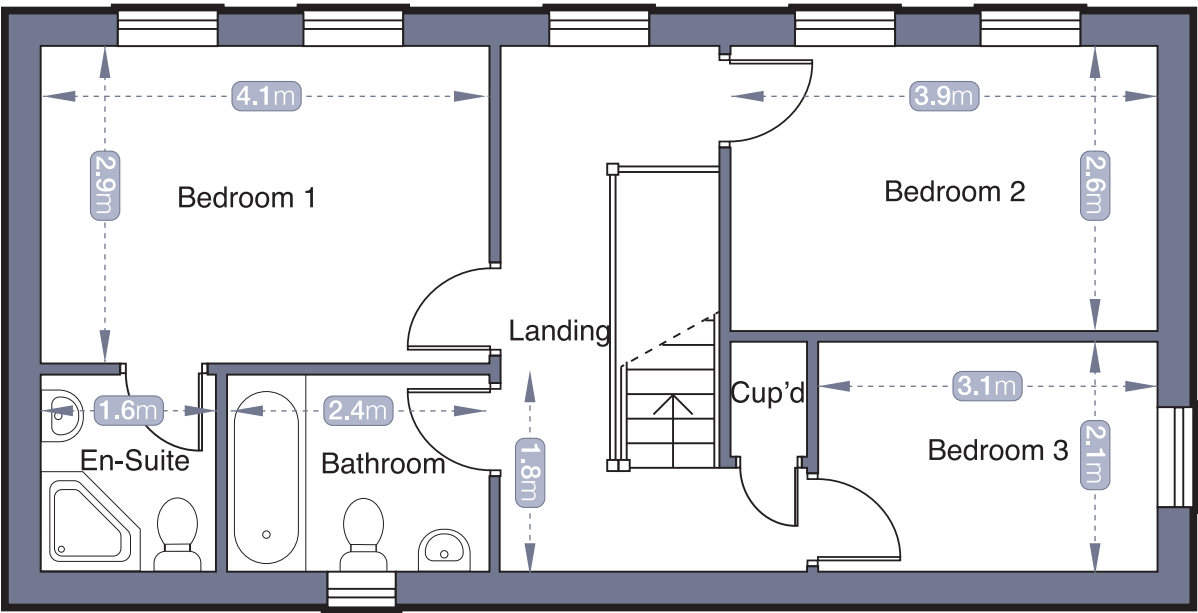


[danumhomes.co.uk](http://danumhomes.co.uk)

# Ground Floor



# First Floor





# Specification

## The Birchwood

3 bedroom detached house

### Bathroom

*Contemporary bathroom to include:*

Bath with splash back tiling

Sink with splash back tiling

Toilet

Chrome heated towel rail

Spotlights

Vinyl cushion flooring

### En-suite

Shower enclosure with full tiling to the walls behind the enclosure

Toilet

Sink with splash back tiling

Chrome heated towel rail

Spotlights

Vinyl cushion flooring

### Downstairs WC

Toilet

Pedestal sink

Chrome heated towel rail

Spotlight

Vinyl cushion flooring

### Entrance Hall

Vinyl cushion flooring

Domelight

### Kitchen

As per design choice of 2 different door finishes and various colour choices

Choice of worktops and upstands

Spotlights to the kitchen area

Vinyl cushion flooring

### Kitchen Appliances

4 zone ceramic hob with contemporary glass splash back

Chimney extractor fan

Single fan assisted built under oven

Integrated 70/30 fridge freezer

Dishwasher

Stainless steel 1.5 sink and waste

Chrome monoblock taps

### Electrical

Please see the attached for what is included in the electrical specification

### External

1.8m x 1.8 patio area

Paths to perimeter

External lighting adjacent to the front and French doors

Turf to the front and rear garden

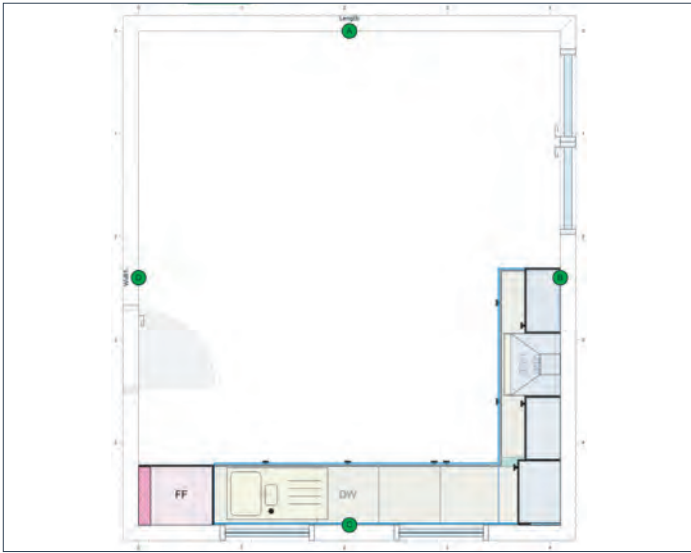
6ft fencing to the perimeter and between plots



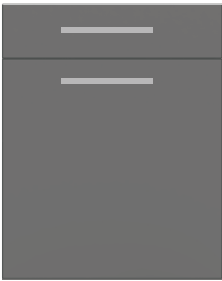
[danumhomes.co.uk](http://danumhomes.co.uk)



The Birchwood  
*Kitchen Specification*



BAND 1 SPECIFICATION



Autograph Gloss  
or Slab Matt



Emily Handle  
Nickle



Washed Concrete Matt



Phoenix Tap  
Chrome



Stainless Steel  
1.5 Bowl Sink



Matrix Single  
Oven



Matrix Ceramic  
Hob



Matrix Extractor



Zanussi  
Dishwasher



Zanussi 70/30  
Fridge Freezer





# The Elm

3 bedroom detached house

The Hedgerow at Warren Wood, Gainsborough

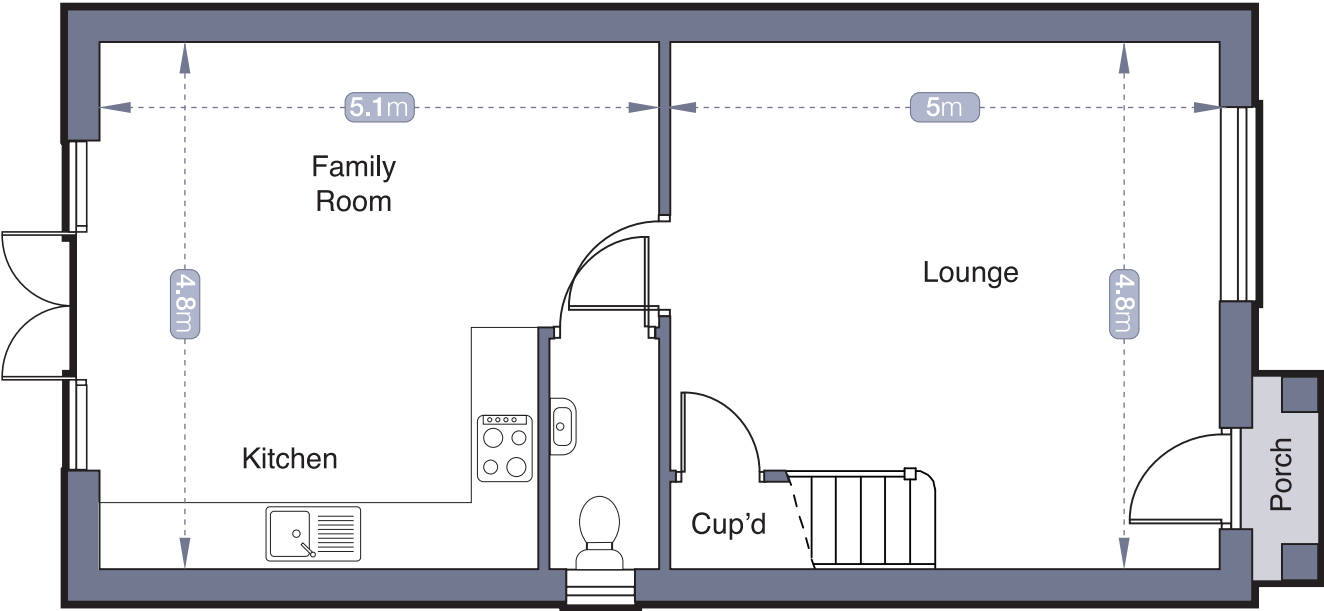
The  
hedgerow  
at Warren Wood



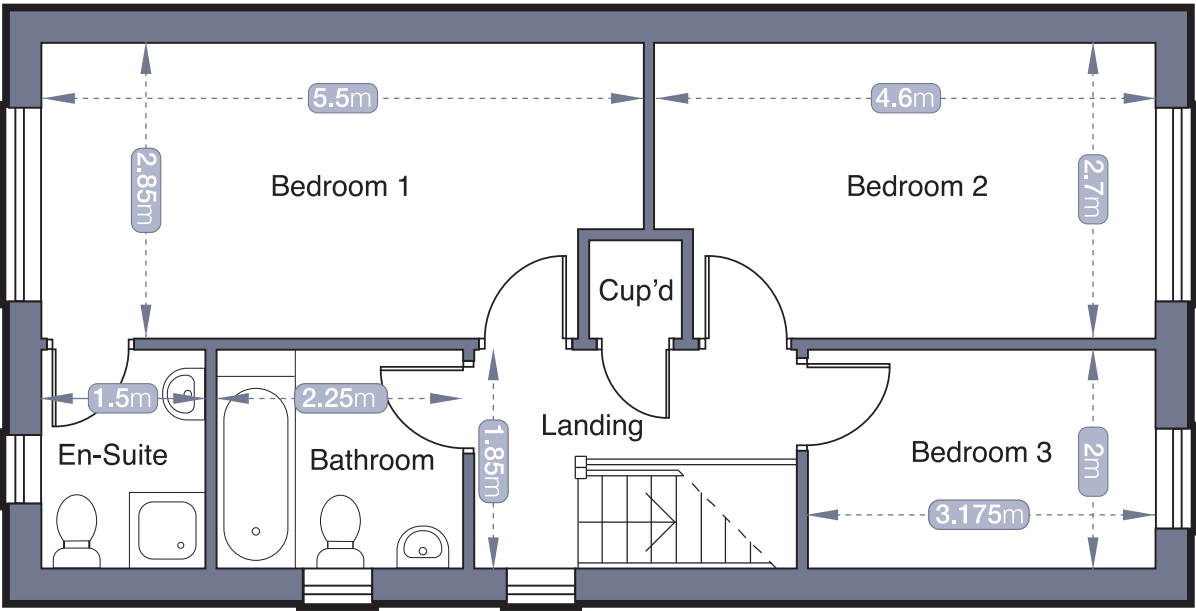
[danumhomes.co.uk](https://danumhomes.co.uk)



# Ground Floor



# First Floor



# Specification

## The Elm

3 bedroom detached house

### Bathroom

*Contemporary bathroom to include:*

Bath with splash back tiling

Sink with splash back tiling

Toilet

Chrome heated towel rail

Spotlights

Vinyl cushion flooring

### En-suite

Shower enclosure with full tiling to the walls behind the enclosure

Toilet

Sink with splash back tiling

Chrome heated towel rail

Spotlights

Vinyl cushion flooring

### Downstairs WC

Toilet

Pedestal sink

Chrome heated towel rail

Domelight

Vinyl cushion flooring

### Entrance Hall

Vinyl cushion flooring

Domelight

### Kitchen

As per design choice of 2 different door finishes and various colour choices

Choice of worktops and upstands

Spotlights to the kitchen area

Vinyl cushion flooring

### Kitchen Appliances

4 zone ceramic hob with contemporary glass splash back

Chimney extractor fan

Single fan assisted built under oven

Integrated 70/30 fridge freezer

Dishwasher

Stainless steel 1.5 sink and waste

Chrome monoblock taps

### Electrical

Please see the attached for what is included in the electrical specification

### External

1.8m x 1.8 patio area

Paths to perimeter

External lighting adjacent to the front and French doors

Turf to the front and rear garden

6ft fencing to the perimeter and between plots

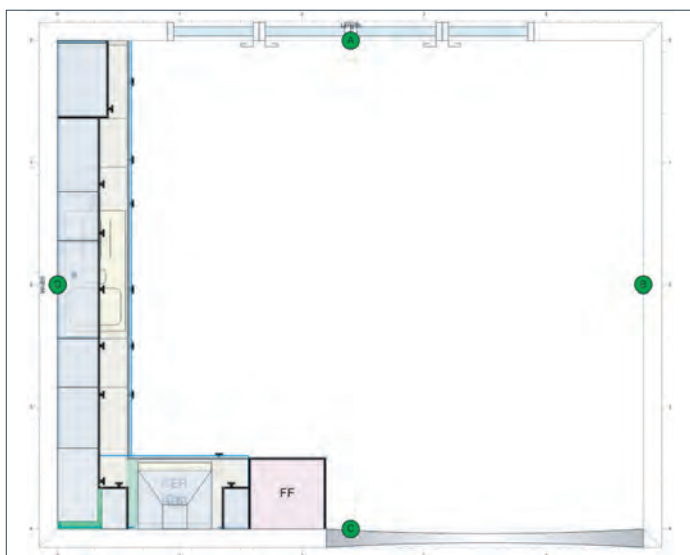


[danumhomes.co.uk](http://danumhomes.co.uk)

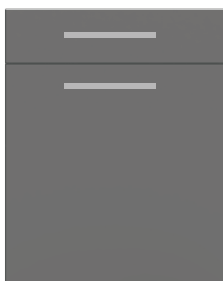


# The Elm

## Kitchen Specification



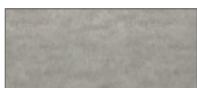
### BAND 1 SPECIFICATION



Autograph Gloss  
or Slab Matt



Emily Handle  
Nickle



Washed Concrete Matt



Phoenix Tap  
Chrome



Stainless Steel  
1.5 Bowl Sink



Matrix Single  
Oven



Matrix Ceramic  
Hob



Matrix Extractor



Zanussi  
Dishwasher



Zanussi 70/30  
Fridge Freezer





# The Wisteria

4 bedroom detached house

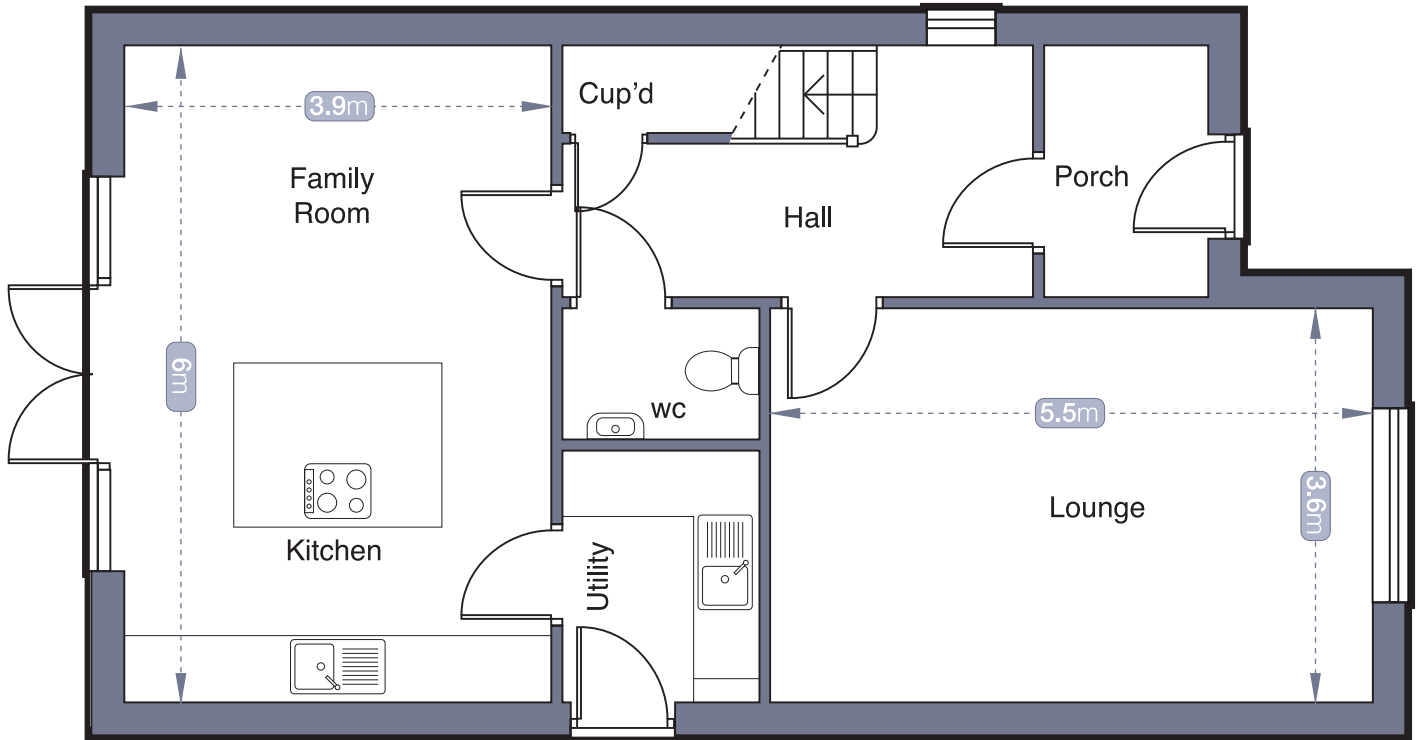
The Hedgerow at Warren Wood, Gainsborough

The  
hedgerow  
at Warren Wood

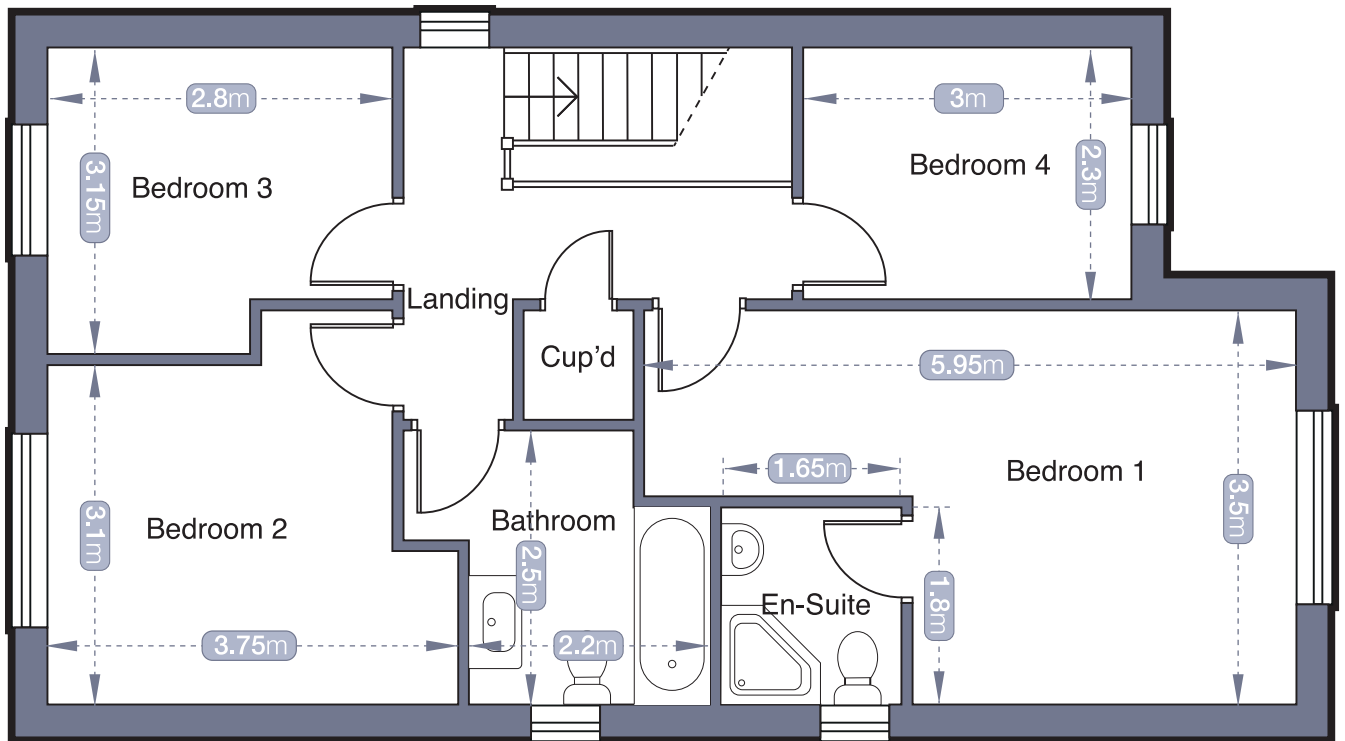


[danumhomes.co.uk](http://danumhomes.co.uk)

## Ground Floor

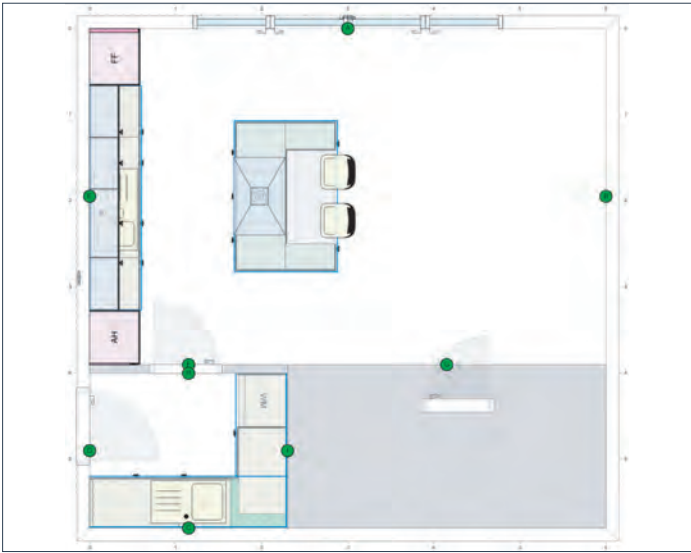


## First Floor

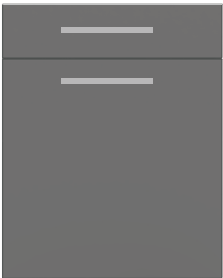




The Wisteria  
*Kitchen Specification*



BAND 1 SPECIFICATION



Autograph Gloss  
or Slab Matt



Emily Handle  
Nickle



Phoenix Tap  
Chrome



Stainless Steel 1.5  
Bowl Sink - Kitchen



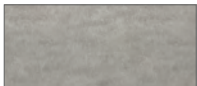
Matrix Single  
Oven



Zanussi Island  
Extractor



Zanussi 70/30  
Fridge Freezer



Washed Concrete Matt



Stainless Steel 1.0  
Bowl Sink - Utility



Matrix Ceramic  
Hob



Zanussi  
Dishwasher



# Specification

## Bathroom

*Contemporary bathroom to include:*

Bath and splashback tiling  
Sink and vanity unit with splash back tiling  
Toilet  
Chrome heated towel rail  
Spotlights  
Vinyl cushion flooring

## En-suite

Shower enclosure with full tiling to the walls behind the enclosure  
Toilet  
Sink and vanity unit with splash back tiling  
Toilet  
Chrome heated towel rail  
Spotlights  
Vinyl cushion flooring

## Downstairs WC

Toilet  
Pedestal sink  
Chrome heated towel rail  
Spotlight  
Vinyl cushion flooring

## Porch

Spotlight  
Vinyl cushion flooring

## Hall

Spotlight  
Vinyl cushion flooring

## Kitchen

As per design choice of 2 different door finishes and various colour choices  
Choice of worktops and upstands  
Spotlights to the kitchen area  
Vinyl cushion flooring

## Kitchen Appliances

Breakfast island housing a 4 zone ceramic hob and single fan assisted built under oven  
Cylinder island extractor fan  
Integrated 70/30 fridge freezer  
Dishwasher  
Integrated microwave and grill  
Stainless steel 1.5 sink and waste  
Chrome monoblock taps

## Utility Room

Washing machine  
Space for dryer  
Stainless steel sink  
Vinyl cushion flooring  
Domelight

## Electrical

Please see the attached for what is included in the electrical specification

## External

3.6m x 1.8m patio area  
Paths to perimeter  
External lighting adjacent to the front and french doors  
Turf to the front and rear garden  
6ft fencing to the perimeter and between plots



# Tile Options

## Tier 1 - Wall Tiles

Main

Park Gris  
25x44.3cm | Grout: Gris



Main

Park Blanco  
25x44.3cm | Grout: Blanco



Main

Bottega Caliza  
25x44.3cm | Grout: Gris



Main

Madagascar Natural  
25x44.3cm | Grout: Gris



Feature

Park Lineal Gris  
25x44.3cm | Grout: Gris



Feature

Park Lineal Blanco  
25x44.3cm | Grout: Blanco



Feature

Marbella Stone  
25x44.3cm | Grout: Gris



Feature

Ona Natural  
25x44.3cm | Grout: Gris



## Tier 1 - Floor Tiles

Park Gris  
44.3x44.3cm | Grout: Cemento



Park Blanco  
44.3x44.3cm | Grout: Gris



Bottega Caliza  
44.3x44.3cm | Grout: Gris



Madagascar Natural  
44.3x44.3cm | Grout: Gris





# Tile Options



## Tier 2 - Wall Tiles

### Main

Bottega Caliza  
33.3x59.2cm | Grout: Marfil



### Feature

Spiga Bottega Caliza  
33.3x59.2cm | Grout: Marfil



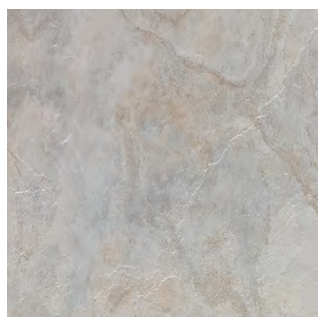
### Main

Rivoli Blanco (matt)  
33.3x59.2cm | Grout: Blanco



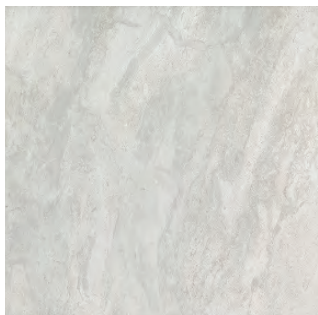
### Feature

Mirage Silver  
33.3x59.2cm | Grout: Gris



### Main

Indic Matt  
33.3x59.2cm | Grout: Manhattan



### Feature

Cubik Indic Matt  
33.3x59.2cm | Grout: Manhattan



## Kitchen / Family - Floor

Bottega Caliza  
60.2X60.2cm | Grout: Gris



Bottega Acero  
60.2X60.2cm | Grout: Cemento



Rivoli Blanco (matt)  
60.2x60.2cm | Grout: Gris



Harlem Calziq  
60.2x60.2 | Grout: Gris



## Kitchen / Family - Floor Premium

Smart Tanzania Silver  
22x90cm | Grout: Cemento



Smart Tanzania Almond  
22x90cm | Grout: Cemento







DANUM  
— HOMES —  
Excellence in Build

[www.danumhomes.co.uk](http://www.danumhomes.co.uk)